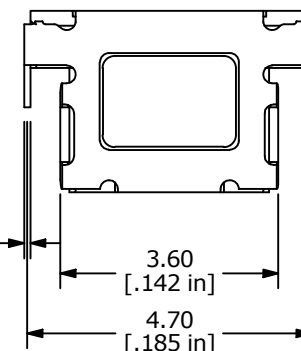
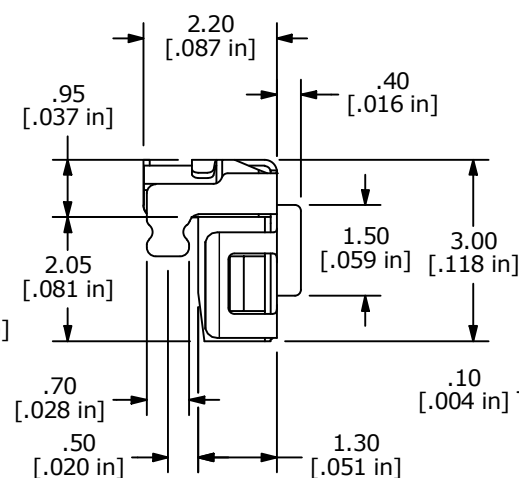
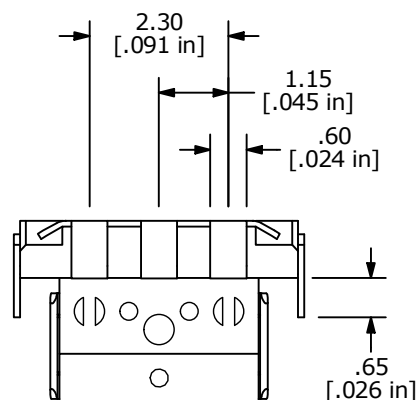
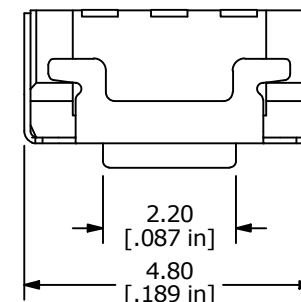
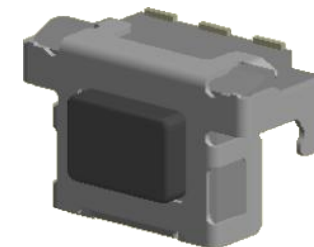



SCHEMATIC



NOTES

1. ALL DIMENSIONS IN MM [INCH]
2. GENERAL TOLERANCE: $X.X \pm 0.4$
 $X.XX \pm 0.25$
3. TERMINAL NUMBERS FOR REF. ONLY.
- ▲ 4. OPERATING FORCE: $160 \pm 50\text{gf}$
5. OPERATING LIFE: 200,000 CYCLES
6. TRAVEL: $0.15 \pm 0.1\text{mm}$
7. CONTACT RATING: 12 VDC, 50mA
8. CONTACT RESISTANCE: 1Ω MAX
9. INSULATION RESISTANCE: $100M \Omega$ MIN. @ 500 VDC
10. BOUNCE MAX: 10m SEC MAX
11. DIELECTRIC STRENGTH: 250 VAC FOR 1 MINUTE
12. OPERATING TEMPERATURE: -40°C to 85°C
13. STORAGE TEMPERATURE: -40°C to 85°C
14. PACKAGING: REEL 2200 PCS. PER
15. ▲ DENOTES CRITICAL PARAMETER

REV	ECO NO	DESCRIPTION	DATE	BY	<div> E-SWITCH®</div>					OBJECT ID
D	ECO-100462	Release	11/19/21	MW						000017355
					TITLE TL4105AF160QG					
THE INFORMATION CONTAINED IN THIS DOCUMENT IS PROPRIETARY TO E-SWITCH AND IS NOT TO BE COPIED OR TRANSFERRED					SCALE 8:1	DATE 4/18/2011	DR BMA	DWG P004010	REV D	

Mouser Electronics

Authorized Distributor

Click to View Pricing, Inventory, Delivery & Lifecycle Information:

[E-Switch:](#)

[TL4105AF160QG](#)